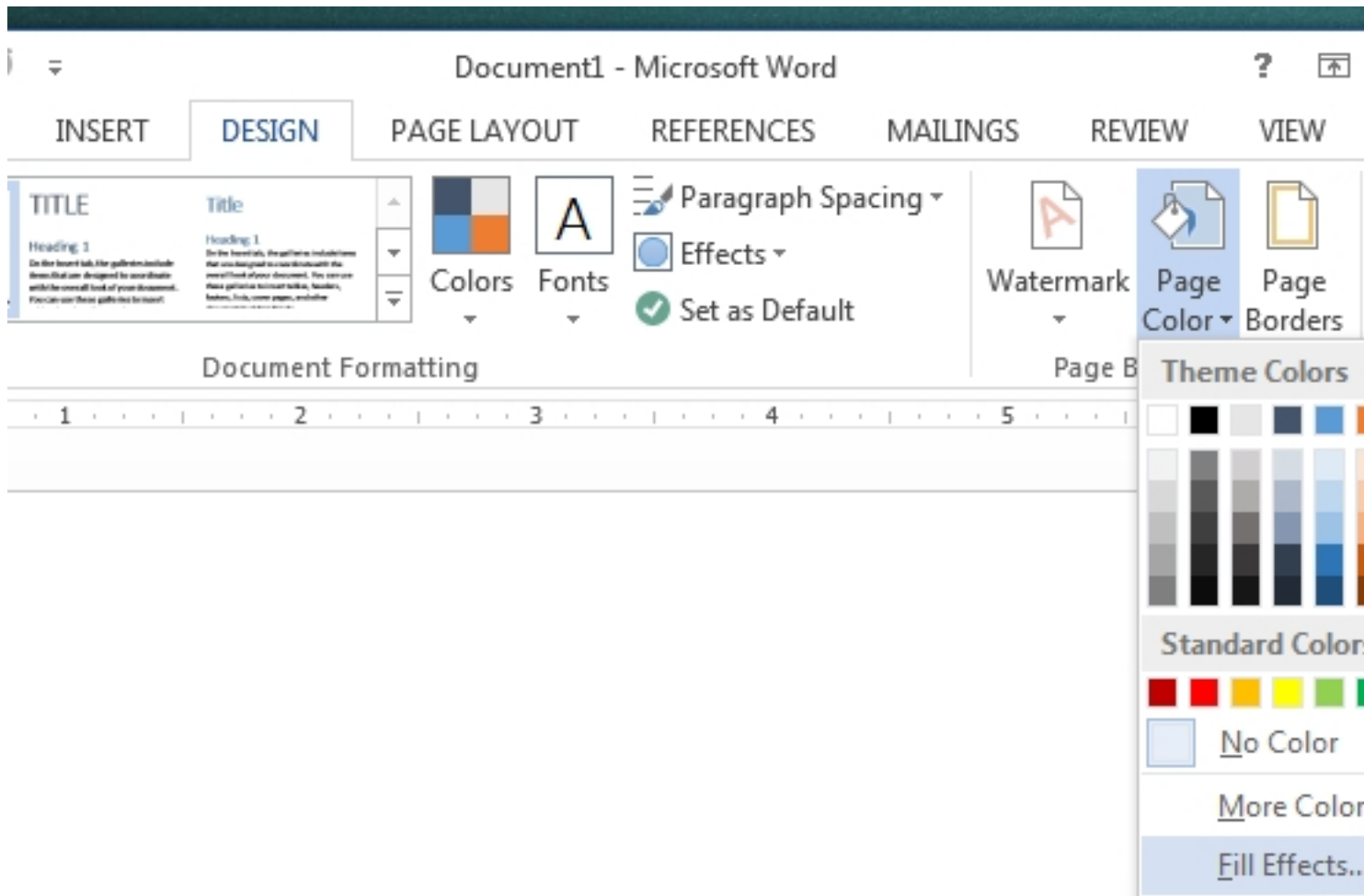


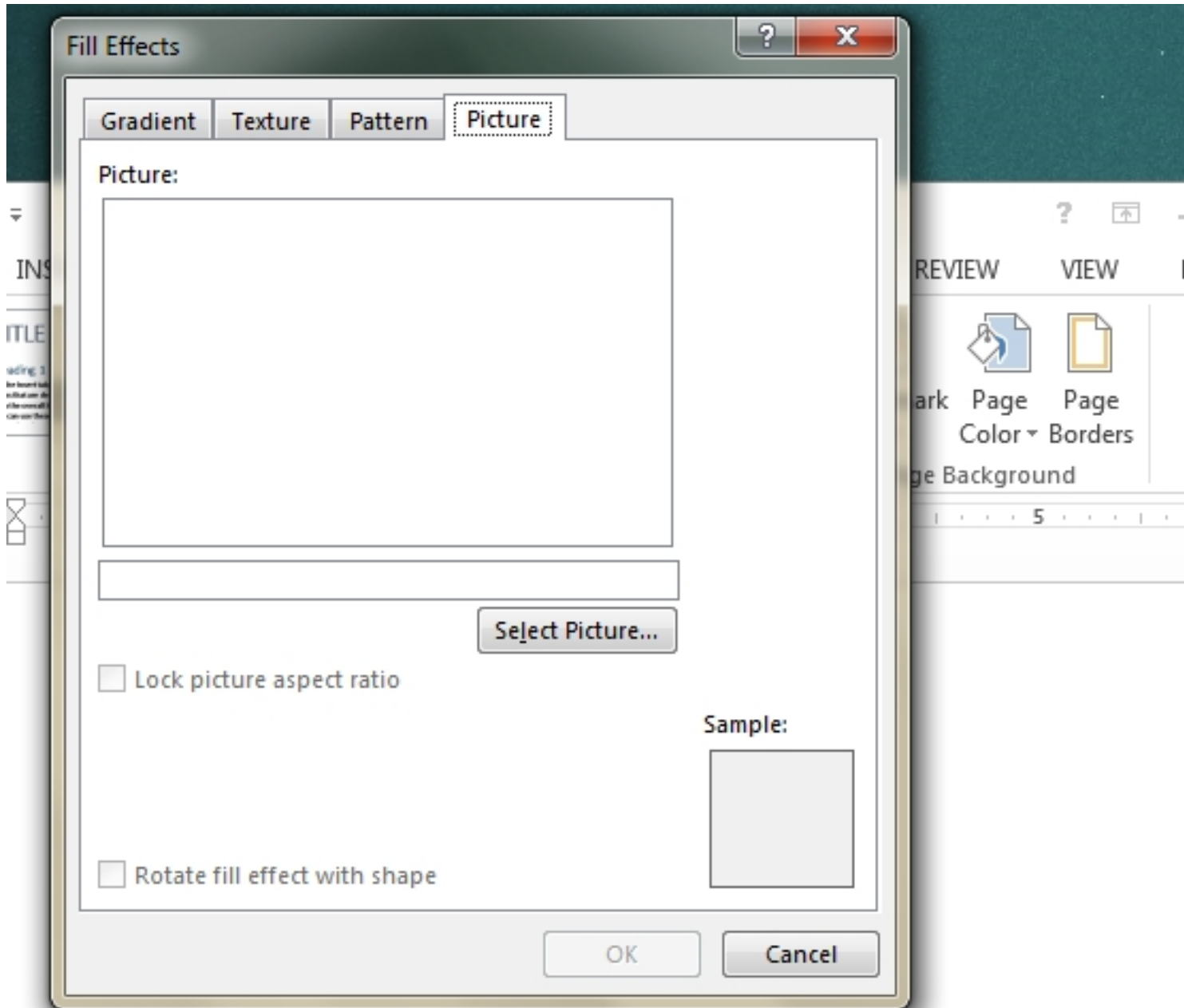
If you ever wanted to print out an MS Word document on a colored page, you would likely just type the document out on a plain white background and insert a colored page in the printer when you print it. The same can't be said if you want to add an image to the background of a page. There's the watermark option to make do with but if you're interested in adding a full page background image to a document and have it tile properly if needed, there's a built-in feature to do just that.

Open the MS Word file you want to add an image background to. Go to the 'Design' tab and click the 'Page Color' drop-down in the 'Page Background' set of tools. A pop-up menu will open with colors to set as the background. At the very bottom of this pop-up is an option 'Fill Effects'. Click it.

# How To Add A Full Page Background To An MS Word Document



Process with images, have help in getting the right color for the page background. The page color is a background color that is applied to the entire page. It can be a solid color, a gradient, or a pattern. The page color is applied to the entire page, including the header and footer. The page color is applied to the entire page, including the header and footer. The page color is applied to the entire page, including the header and footer.



[How To Add A Full Page Background To An MS Word Document](#) - This article will guide you through the steps to add a background to your MS Word document.